

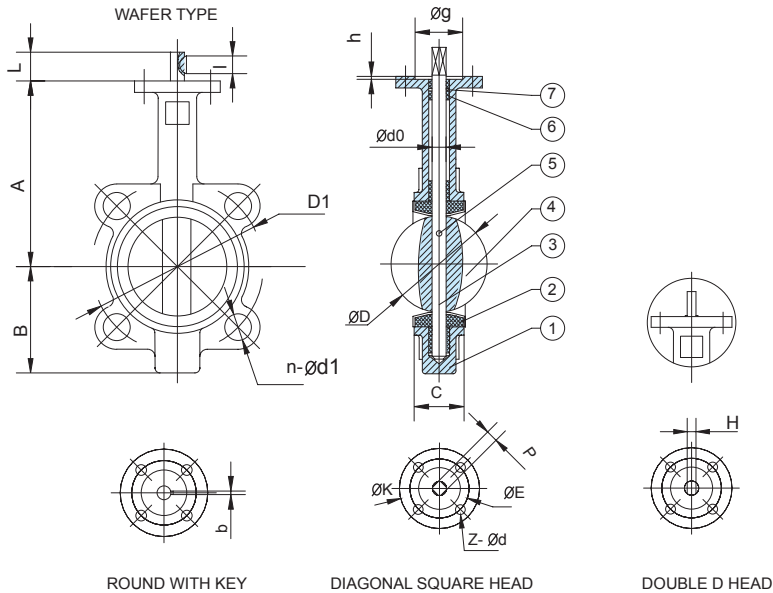
BUTTERFLY VALVE

EN 1074-2:2000 / A1:2004

DN40 - DN1000



Wafer Butterfly Valve



STANDARD MATERIALS OF MAIN PARTS

| NO. | PART | MATERIAL |
|-----|---------|--|
| 1 | Body | Cast Iron ,Ductile Iron ,Carbon Steel ,Stainless Steel |
| 2 | Seat | NBR,EPDM,Viton,Neoprene ,Hypalon,Silicon |
| 3 | Shaft | Stainless Steel416,316,304 |
| 4 | Disc | Ductile Iron +Ni,CF8,CF8M,Bronze |
| 5 | Pin | Stainless Steel |
| 6 | Bushing | PTFE,Bronze |
| 7 | O Ring | NBR,EPDM |

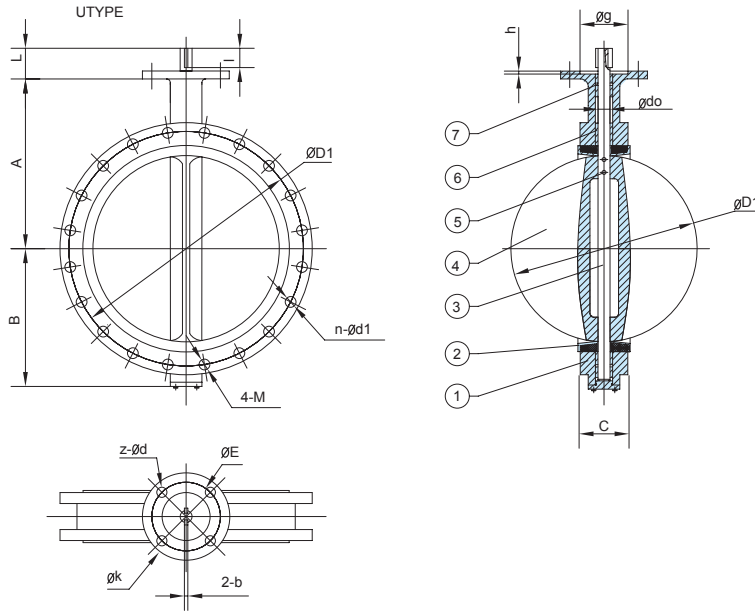
DIMENSIONS

| SIZE | in | DN | A | B | C | D | L | d0 | P | H | key | | UPPER FLANGE | | | ANSI 150 | | DIN PN16/10 | |
|-------|------|-----|-----|-------|-------|---------|-------------|----|----|----------|-----|-----|--------------|-----|-------|----------|-------|-------------|----------|
| | | | | | | | | | | | bxl | K | E | z-d | g | h | D1 | n-d1 | D1 |
| 1/2 | 40 | 145 | 75 | 33 | 42.4 | 32 | 12.6 | - | - | 3X16 | 77 | 50 | 4-7 | 35 | 98.5 | 4-16 | 110 | 4-18 | |
| 2 | 50 | 161 | 80 | 42 | 52.6 | 32 | 12.6 | 9 | 10 | 3X16 | 77 | 50 | 4-7 | 35 | 120.5 | 4-19 | 125 | 4-18 | |
| 2-1/2 | 65 | 175 | 89 | 44.7 | 64.5 | 32 | 12.6 | 9 | 10 | 3X16 | 77 | 50 | 4-7 | 35 | 139.5 | 4-19 | 145 | 4-18 | |
| 3 | 80 | 181 | 95 | 45.2 | 78.8 | 32 | 12.6 | 9 | 10 | 3X16 | 77 | 50 | 4-7 | 35 | 152.5 | 4-19 | 160 | 4/8-18 | |
| 4 | 100 | 200 | 114 | 52.1 | 104 | 32 | 15.77 | 11 | 12 | 5X19 | 90 | 70 | 4-9 | 55 | 190.5 | 8-19 | 180 | 8-18 | |
| 5 | 125 | 213 | 127 | 54.4 | 123.3 | 32 | 18.92 | 14 | 14 | 5X19 | 90 | 70 | 4-9 | 55 | 216 | 8-22 | 210 | 8-18 | |
| 6 | 150 | 226 | 139 | 55.8 | 155.6 | 32 | 18.92 | 14 | 14 | 5X19 | 90 | 70 | 4-9 | 55 | 241.5 | 8-22 | 240 | 8-23 | |
| 8 | 200 | 260 | 175 | 60.6 | 202.5 | 45 | 22.1 | 17 | 17 | 5X19 | 125 | 102 | 4-12 | 70 | 35 | 298.5 | 8-22 | 295 | 8/12-23 |
| 10 | 250 | 292 | 203 | 65.6 | 250.5 | 45 | 28.45 | 22 | 22 | 8X28 | 125 | 102 | 4-12 | 70 | 35 | 362 | 12-25 | 350/355 | 12-23/27 |
| 12 | 300 | 337 | 242 | 76.9 | 301.6 | 45 | 31.6 | 22 | 24 | 8X28 | 140 | 102 | 4-12 | 70 | 35 | 432 | 12-25 | 400/410 | 12-23/27 |
| 14 | 350 | 368 | 267 | 76.5 | 333.3 | 45 | 31.6 | 22 | 24 | 8X28 | 140 | 102 | 4-12 | 70 | 35 | 476 | 12-29 | 460/470 | 16-23/27 |
| 16 | 400 | 400 | 309 | 86.5 | 389.6 | 51.2/72 | 33.15/38 | 24 | 24 | 10X50 | 197 | 140 | 4-18 | 100 | 4 | 540 | 16-29 | 515/525 | 16-27/30 |
| 18 | 450 | 422 | 328 | 106.6 | 440.5 | 51.2/72 | 38/42.86 | 27 | 27 | 10X50 | 197 | 140 | 4-18 | 100 | 4 | 578 | 16-32 | 565/585 | 20-27/30 |
| 20 | 500 | 480 | 361 | 131.8 | 491.6 | 64.2/82 | 41.15/45.72 | 36 | 32 | 10X50 | 197 | 140 | 4-18 | 100 | 4 | 635 | 20-32 | 620/650 | 20-27/33 |
| 24 | 600 | 562 | 459 | 152 | 592.5 | 70.2/82 | 50.65/53.98 | 36 | 36 | 2-16X60 | 276 | 165 | 4-23 | 130 | 5 | 749.5 | 20-35 | 725/770 | 20-30/36 |
| 28 | 700 | 624 | 520 | 163 | 695 | 66/82 | 55/63.35 | - | - | 2-18X63 | 300 | 254 | 8-18 | 200 | 5.5 | 863.5 | 28-35 | 840 | 24-30/36 |
| 30 | 750 | 660 | 539 | 165 | 744.3 | 66/82 | 55/63.35 | - | - | 2-18X63 | 300 | 254 | 8-18 | 200 | 5.5 | 914.5 | 28-35 | - | - |
| 32 | 800 | 672 | 591 | 188 | 794.7 | 66/82 | 55/63.35 | - | - | 2-18X63 | 300 | 254 | 8-18 | 200 | 5.5 | 978 | 28-41 | 950 | 24-33/39 |
| 36 | 900 | 720 | 656 | 203 | 864.7 | 118 | 75 | - | - | 2-20X100 | 300 | 254 | 8-18 | 200 | 5.5 | 1086 | 32-41 | 1050 | 28-33/39 |
| 40 | 1000 | 800 | 721 | 216 | 965 | 142 | 85 | - | - | 2-20X100 | 300 | 254 | 8-18 | 200 | 5.5 | 1200 | 36-41 | 1160/1170 | 28-36/42 |

- Type: Wafer
- Face to Face: API609,BS5155,DIN3202, ISO5752
- Flange: DIN,BS,UNI,ISO,ANSI, AS,JIS
- Mounting Flange: ISO5211
- Working Pressure: PN16(200PSI)
- Application: HVAC,Water Supply&Sewage, Food&Beverage. Chemical/ petrochemical/processing, Power and Utilities,Paper and Pulp, Ship Building



U-Type Butterfly Valve



- Type: U-type
- Face to Face: BS5155, DIN3202, ISO5752
- Flange: DIN, BS, UNI, ISO, ANSI, AS, JIS
- Mounting Flange: ISO5211

- Working Pressure: PN16(200PSI)
- Application: HVAC, Water Supply & Sewage, Food & Beverage, Chemical/ petrochemical/processing, Power and Utilities, Paper and Pulp, Ship Building

STANDARD MATERIALS OF MAIN PARTS

| NO. | PART | MATERIAL |
|-----|---------|--|
| 1 | Body | Cast Iron ,Ductile Iron ,Carbon Steel ,Stainless Steel |
| 2 | Seat | NBR,EPDM,Viton,Neoprene ,Hypalon,Silicon |
| 3 | Shaft | Stainless Steel 416,316,304 |
| 4 | Disc | Ductile Iron +Ni,CF8,CF8M,Bronze |
| 5 | Pin | Stainless Steel |
| 6 | Bushing | PTFE,Bronze |
| 7 | O Ring | NBR,EPDM |

DIMENSIONS

| SIZE | | A | B | C | D | L | DO | KEY 2-bx1 | UPPER FLANGE | | | ANSI150 | | | DIN PN10/PN16 | | | | |
|------|------|-----|-----|-------|--------|---------|-------------|-----------|--------------|-----|------|---------|-----|--------|---------------|---------|-----------|----------|-----------|
| in | DN | | | | | | | | K | E | z-d | g | h | D1 | n-d1 | 4-M | D1 | n-d1 | 4-M |
| 16 | 400 | 400 | 309 | 86.5 | 389.6 | 51.2/72 | 33.15/38 | 1-10X50 | 197 | 140 | 4-18 | 100 | 4 | 540 | 16-29 | - | 515/525 | 16-27/30 | - |
| 18 | 450 | 422 | 328 | 105.6 | 440.5 | 51.2/72 | 38.42/86 | 1-10X50 | 197 | 140 | 4-18 | 100 | 4 | 578 | 16-32 | - | 565/585 | 20-27/30 | - |
| 20 | 500 | 480 | 361 | 131.8 | 491.6 | 53/78 | 41.15/45.72 | 1-10X50 | 197 | 140 | 4-18 | 100 | 4 | 635 | 20-32 | - | 620/650 | 20-27/33 | - |
| 24 | 600 | 562 | 459 | 152 | 592.5 | 70.2/82 | 50.65/53.98 | 2-16X60 | 276 | 165 | 4-23 | 130 | 5 | 749.5 | 20-35 | - | 725/770 | 20-30/36 | - |
| 28 | 700 | 624 | 520 | 160 | 695 | 66/82 | 55.63/35 | 2-18X63 | 300 | 254 | 8-18 | 200 | 5.5 | 863.5 | 24-35 | 4-11/4" | 840 | 20-30/36 | 4-M27/M33 |
| 30 | 750 | 660 | 539 | 165 | 744.3 | 66/82 | 55.63/35 | 2-18X63 | 300 | 254 | 8-18 | 200 | 5.5 | 914.5 | 24-35 | 4-11/4" | - | - | - |
| 32 | 800 | 672 | 591 | 188 | 794.7 | 66/82 | 55.63/35 | 2-18X63 | 300 | 254 | 8-18 | 200 | 5.5 | 978 | 24-41 | 4-11/2" | 950 | 20-33/39 | 4-M30/M36 |
| 36 | 900 | 720 | 656 | 200 | 864.7 | 118 | 75 | 2-20X100 | 300 | 254 | 8-18 | 200 | 5.5 | 1086 | 28-41 | 4-11/2" | 1050 | 24-33/39 | 4-M30/M36 |
| 40 | 1000 | 800 | 721 | 216 | 965 | 142 | 85 | 2-22X140 | 300 | 254 | 8-18 | 200 | 5.5 | 1200 | 32-41 | 4-11/2" | 1160/1170 | 24-36/42 | 4-M33/M39 |
| 42 | 1050 | 858 | 757 | 251 | 1030.5 | 150 | 95 | 2-25X140 | 300 | 254 | 8-18 | 200 | 5.5 | 1257.5 | 32-41 | 4-11/2" | - | - | - |
| 48 | 1200 | 941 | 844 | 276 | 1161.2 | 150 | 105 | 2-28X140 | 350 | 298 | 8-23 | 230 | 5.5 | 1422.5 | 40-41 | 4-11/2" | 1380/1390 | 28-39/48 | 4-M36/M45 |



• CONCENTRIC BUTTERFLY VALVE



- Water works and water resource project
- Environment protection
- Public facilities
- Power and public utilities
- Building industry
- Petroleum, chemical
- Steel, metallurgy
- Paper making industry
- Foods, Beverage



Butterfly valve as used as shutting-off or throttling unit for petroleum processing, chemicals, food, medicine, textile, paper making, hydroelectricity engineering as well as light industry, etc. it can be installed in any selected position.

Type: Wafer, Lugged
 Face to Face: AP1609, BS5155, DIN3202, ISO 5752
 Flange: DIN, BS, UNI, ISO, ANSI, AS, JIS
 Mounting Flange: ISO5211

Working Pressure: PN16(200PSI)
 Application: HVAC, Water Supply & Sewage, Food & Beverage, Chemical/petrochemical/processing, Power and Utilities, Paper and Pulp, Ship Building

Weather Seal

Top bushing keeps dust and moisture from entering the upper shaft journal.

Shaft

Two stub shaft design allows the disc to float within the flow-way increasing cycle life.

Bushing(6)

Shaft bushing reduce torque and isolate the shaft from the valve body preventing seizure of the shaft due to corrosion in the shaft journal.

Seat Face

Seat to flange seal eliminates the need for flange gaskets.

Seat

Phenolic-backed seat is non-collapsible, stretch resistant, blow out proof, and field replaceable

Mounting Flange

ISO 5211 mounting flange accommodates direct mounting of all types of actuators, including: handles, gear operators, electric and pneumatic.

O-Ring(2)

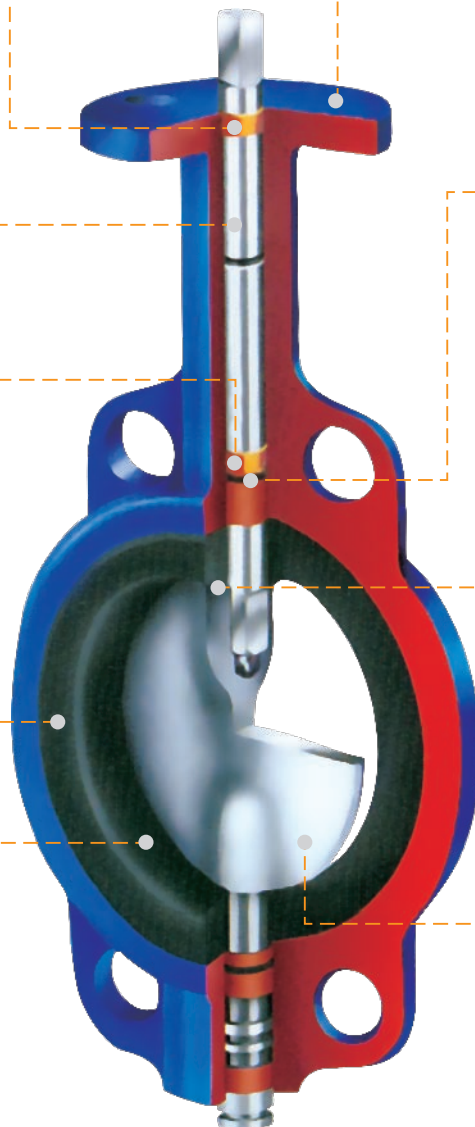
Shaft seal provides further assurance against stem leakage.

Hub Seal

Smooth finished disc flats mate with seat flats to give a highly efficient prevents leakage into the shaft area.

Disc

Precision profile provides bubble-tight shut-off, assures minimum torque and longer seat life. Maximum flow is achieved.

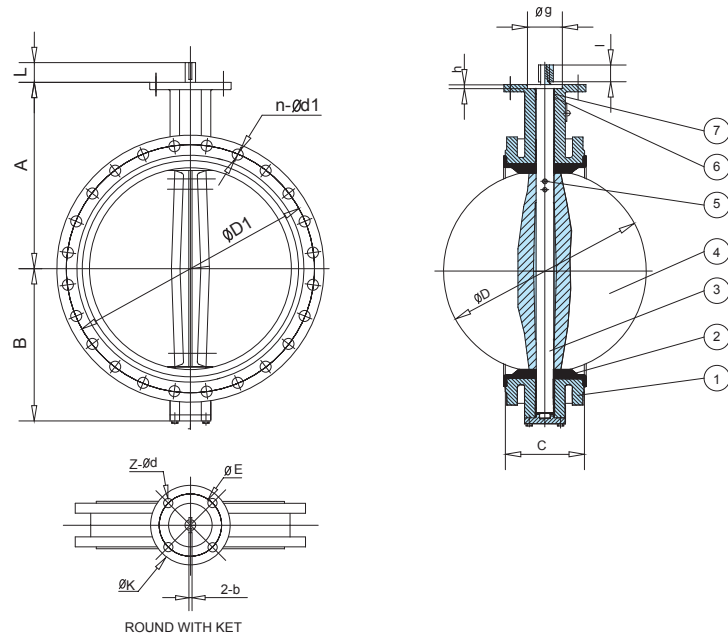




- Type:
Flange
 - Face to Face:
BS5155,ISO5752
 - Flange:
DIN,BS,UNI,ISO,ANSI, AS,JIS
 - Mounting Flange:
ISO5211
-
- Working Pressure:
PN16(200PSI)
 - Application:
HVAC,Water Supply&Sewage,
Food&Beverage. Chemical/
petrochemical/processing, Power and
Utilities,Paper and Pulp, Ship Building



Concentric Flanged Butterfly Valve



STANDARD MATERIALS OF MAIN PARTS

| NO. | PART | MATERIAL |
|-----|---------|------------------------------------|
| 1 | Body | Cast Iron, Ductile Iron |
| 2 | Seat | NBR,EPDM |
| 3 | Shaft | Stainless Steel 416, 316, 304 |
| 4 | Disc | Ductile Iron+Ni, CF8, CF8M, Bronze |
| 5 | Pin | Stainless Steel |
| 6 | Bushing | PTFE, Bronze |
| 7 | O Ring | NBR, EPDM |

DIMENSIONS

| SIZE | in | DN | A | B | C | D | L | KEY b×1 | UPPER FLANGE | | | | ANSI 150 | | DIN PN10/PN16 | |
|------|------|-----|-----|-----|-------|---------|----------|------------|--------------|------|-----|-----|----------|-------|---------------|----------|
| | | | | | | | | | K | E | z-d | g | h | D1 | n-d1 | D1 |
| 2 | 50 | 120 | 83 | 108 | 52.9 | 32 | 3×16 | 70 | 50 | 4-7 | 35 | 3 | 120.5 | 4-19 | 125 | 4-18 |
| 2½ | 65 | 130 | 93 | 112 | 64.5 | 32 | 3×16 | 70 | 50 | 4-7 | 35 | 3 | 139.5 | 4-19 | 145 | 4-18 |
| 3 | 80 | 145 | 100 | 114 | 78.8 | 32 | 3×16 | 70 | 50 | 4-7 | 35 | 3 | 152.5 | 4-19 | 160 | 4/8-18 |
| 4 | 100 | 155 | 114 | 127 | 104 | 32 | 5×19 | 90 | 70 | 4-9 | 55 | 3 | 190.5 | 8-19 | 180 | 8-18 |
| 5 | 125 | 170 | 125 | 140 | 123.3 | 32 | 5×19 | 90 | 70 | 4-9 | 55 | 3 | 216 | 8-22 | 210 | 8-18 |
| 6 | 150 | 190 | 143 | 140 | 155.6 | 32 | 5×19 | 90 | 70 | 4-9 | 55 | 3 | 241.5 | 8-22 | 240 | 8-23 |
| 8 | 200 | 205 | 170 | 152 | 202.5 | 45 | 5×19 | 125 | 102 | 4-12 | 70 | 3.5 | 298.5 | 8-22 | 295 | 8/12-23 |
| 10 | 250 | 235 | 198 | 165 | 250.5 | 45 | 8×28 | 125 | 102 | 4-12 | 70 | 3.5 | 362 | 12-25 | 350/355 | 12-23/27 |
| 12 | 300 | 280 | 223 | 178 | 301.6 | 45 | 8×28 | 140 | 102 | 4-12 | 70 | 3.5 | 432 | 12-25 | 400/410 | 12-23/27 |
| 14 | 350 | 310 | 279 | 190 | 333.3 | 45 | 8×28 | 140 | 102 | 4-12 | 70 | 3.5 | 476 | 12-29 | 460/470 | 16-23/27 |
| 16 | 400 | 340 | 300 | 216 | 389.6 | 51.2/72 | 10×50 | 197 | 140 | 4-18 | 100 | 4 | 540 | 16-29 | 515/525 | 16-27/30 |
| 18 | 450 | 375 | 345 | 222 | 440.5 | 51.2/72 | 10×50 | 197 | 140 | 4-18 | 100 | 4 | 578 | 16-32 | 565/585 | 20-27/30 |
| 20 | 500 | 430 | 355 | 229 | 491.6 | 52.7/75 | 10×50 | 197 | 140 | 4-18 | 100 | 4 | 635 | 20-32 | 620/650 | 20-27/33 |
| 24 | 600 | 500 | 410 | 267 | 592.5 | 70.2/80 | 2-16×60 | 276 | 165 | 4-23 | 130 | 5 | 749.5 | 20-35 | 725/770 | 20-30/36 |
| 28 | 700 | 560 | 478 | 292 | 695 | 66/82 | 2-18×63 | 300 | 254 | 8-18 | 200 | 5.5 | 863.5 | 28-35 | 840 | 24-30/36 |
| 32 | 800 | 620 | 529 | 318 | 794.7 | 66/82 | 2-18×63 | 300 | 254 | 8-18 | 200 | 5.5 | 978 | 28-41 | 950 | 24-33/39 |
| 36 | 900 | 665 | 584 | 330 | 864.7 | 118 | 2-20×100 | 300 | 254 | 8-18 | 200 | 5.5 | 1086 | 32-41 | 1050 | 28-33/39 |
| 40 | 1000 | 735 | 657 | 410 | 965 | 141 | 2-22×140 | 300 | 254 | 8-18 | 200 | 5.5 | 1200 | 36-41 | 1160/1170 | 28-36/42 |

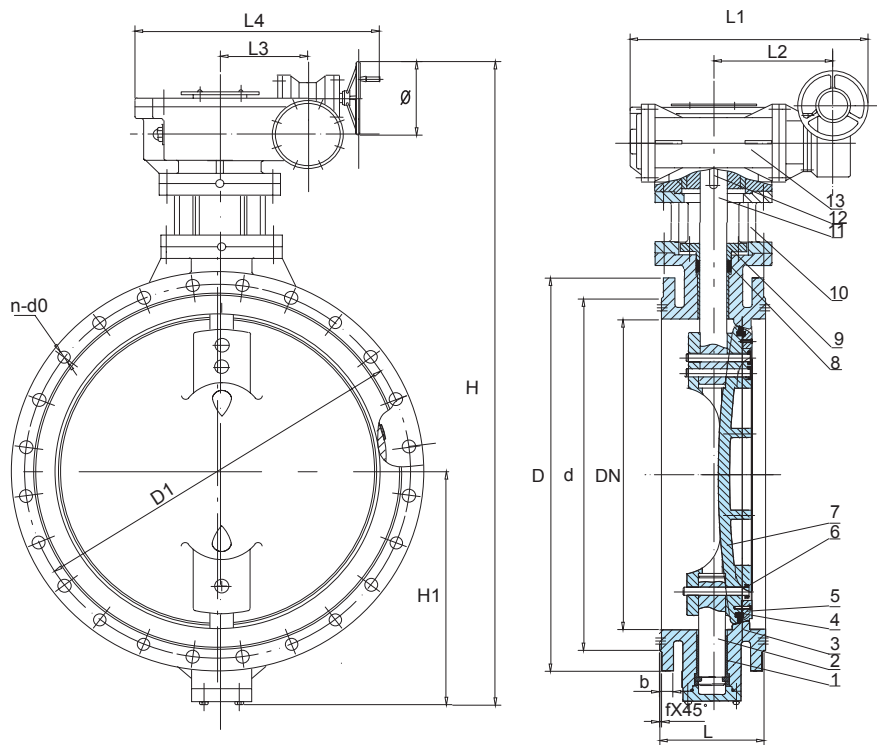
NOTE:(1) The maximum working pressure is 1.6 Mpa(200PSI) for 11/2"-12", 1.0MPa (150PSI) for 14"and larger.
(2) 14"-24" maximum working pressure of 1.6Mpa(200PSI) can be supplied as per specified order requirement.

Resilient Seated Eccentric Flanged Butterfly Valve



- Type:
Flanged
- Face to Face:
API609,BS5155,DIN3202, ISO5752
- Flange:
DIN,BS,UNI,ISO,ANSI, AS,JIS
- Mounting Flange:
ISO5211

-
- Working Pressure:
PN10
 - Application:
HVAC,Water Supply&Sewage,
Food&Beverage. Chemical/
petrochemical/processing, Power and
Utilities,Paper and Pulp, Ship Building





Resilient Seated Eccentric Flanged Butterfly Valve

STANDARD MATERIALS OF MAIN PARTS

| NO. | PART | MATERIAL |
|-----|-------------------|------------------------|
| 1 | Bushing | Bronze/PTFE |
| 2 | Bottom Shaft | Stainless Steel 420 |
| 3 | Body | Cast Iron/Ductile Iron |
| 4 | Disc Sealing Ring | NBR |
| 5 | Ratiner | Carbon Steel |
| 6 | Taper Pin | Stainless Steel 420 |
| 7 | Disc | Ductile Iron |
| 8 | Sealing Ring | NBR |
| 9 | Stuffing Flange | Ductile Iron |
| 10 | Support | Ductile Iron |
| 11 | Top Shaft | Stainless Steel 420 |
| 12 | Key | Carbon Steel |
| 13 | Actuator | Worm gear Actuator |

| DN | d | D1 | D | H | H1 | L | | | L1 | L2 | L3 | L4 | f | Φ | b | n-d1 |
|-------------|------|------|------|------|-----|------------|-------------|-----------|-----|-----|-----|-----|---|-----|------|-------|
| | | PN10 | | | | SHORT BODY | MIDDLE BODY | LONG BODY | | | | | | | | PN10 |
| DN450(18") | 530 | 565 | 615 | 1164 | 344 | 152 | 222 | 330 | 473 | 147 | 109 | 420 | 4 | 400 | 25.5 | 20-28 |
| DN500(20") | 582 | 620 | 670 | 1226 | 381 | 152 | 229 | 350 | 473 | 147 | 109 | 420 | 4 | 400 | 26.5 | 20-28 |
| DN600(24") | 682 | 725 | 780 | 1380 | 450 | 178 | 267 | 390 | 533 | 179 | 138 | 476 | 5 | 400 | 30 | 20-31 |
| DN700(28") | 794 | 840 | 895 | 1585 | 535 | 229 | 292 | 430 | 533 | 179 | 138 | 476 | 5 | 400 | 32.5 | 24-31 |
| DN800(32") | 901 | 950 | 1015 | 1750 | 590 | 241 | 318 | 470 | 655 | 217 | 170 | 577 | 5 | 500 | 35 | 24-34 |
| DN900(36") | 1001 | 1050 | 1115 | 1840 | 643 | 241 | 330 | 510 | 655 | 217 | 170 | 577 | 5 | 500 | 37.5 | 28-34 |
| DN1000(40") | 1112 | 1160 | 1230 | 1999 | 722 | 300 | 410 | 550 | 655 | 217 | 170 | 577 | 5 | 500 | 40 | 28-37 |
| DN1200(48") | 1328 | 1380 | 1455 | 2351 | 840 | 350 | 470 | 630 | 748 | 262 | 202 | 664 | 5 | 500 | 45 | 32-40 |

| DN | d | D1 | D | H | H1 | L | | | L1 | L2 | L3 | L4 | f | Φ | b | n-d1 |
|------------|-----|------|-----|------|-----|------------|-------------|-----------|-----|----|-----|-----|---|-----|------|-------|
| | | PN10 | | | | SHORT BODY | MIDDLE BODY | LONG BODY | | | | | | | | PN10 |
| DN100(4") | 156 | 180 | 220 | 419 | 109 | / | 127 | 190 | 97 | 45 | 158 | 210 | 3 | 150 | 19 | 8-19 |
| DN150(6") | 211 | 240 | 285 | 583 | 143 | / | 140 | 210 | 97 | 45 | 158 | 210 | 3 | 150 | 19 | 8-23 |
| DN200(8") | 266 | 295 | 340 | 692 | 182 | 89 | 152 | 230 | 140 | 63 | 238 | 315 | 3 | 300 | 20 | 8-23 |
| DN250(10") | 319 | 350 | 395 | 784 | 219 | 114 | 165 | 250 | 140 | 63 | 238 | 315 | 3 | 300 | 22 | 12-23 |
| DN300(12") | 370 | 400 | 445 | 874 | 244 | 114 | 178 | 270 | 167 | 72 | 167 | 242 | 4 | 300 | 24.5 | 12-23 |
| DN350(14") | 429 | 460 | 505 | 998 | 283 | 127 | 190 | 290 | 201 | 91 | 188 | 275 | 4 | 400 | 24.5 | 16-23 |
| DN400(16") | 480 | 515 | 565 | 1062 | 312 | 140 | 216 | 310 | 201 | 91 | 188 | 275 | 4 | 400 | 24.5 | 16-28 |